

**W385/W386 Operational Test**  
**Baseline Hydrologic Data Monitoring**  
**Quarterly Update**

Groundwater Level and Surface  
Water Data

**Prepared by: Eastern Sierra Environmental Group**

**Los Angeles Department of Water and Power**

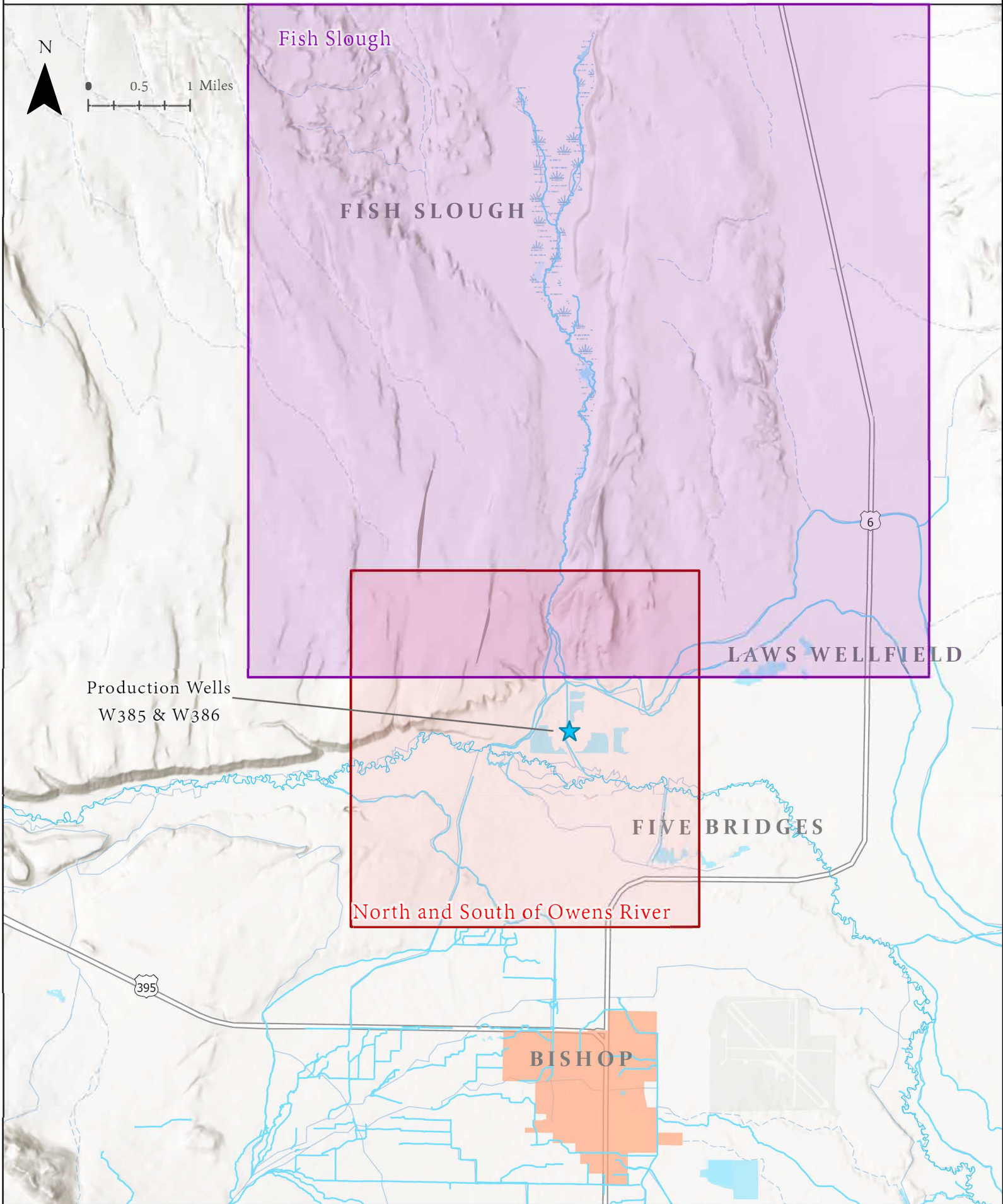
**February 2026**

## Monitoring Well Information

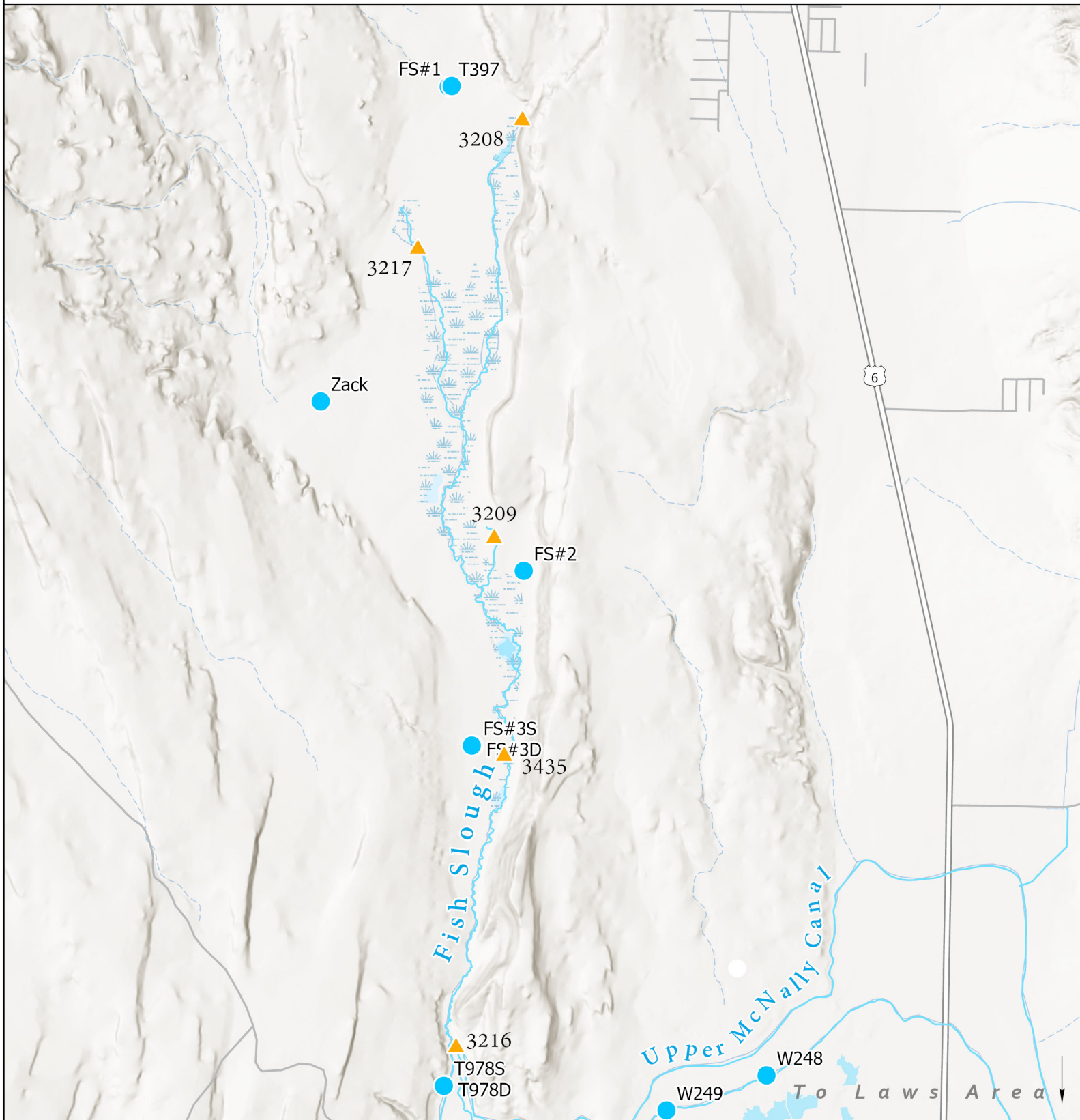
Well	Total Depth (ft)	RP Offset from Ground (ft)	RP Elevation (ft-amsl)	Distance from W385/W386 (mi)
FS #1	61	1.82	4,228.90	7.1
FS #2	46	1.80	4,221.60	4.0
FS #3D	145	2.59	4,194.84	2.8
FS #3S	35	2.76	4,194.22	2.8
T397	180	1.87	4,230.07	7.1
T438	37	3.21	4,142.11	0.6
T576†	18	0.92	4,129.42	1.0
T704	32	2.33	4,150.63	0.1
T733	674	1.44	4,151.24	0.1
T752	680	2.97	4,200.17	1.8
T753	100	1.97	4,199.17	1.8
T754	210	3.82	4,201.02	1.8
T755	490	2.99	4,200.19	1.8
T756	45	2.00	4,154.60	0.7
T757	310	2.26	4,154.86	0.7
T758	575	2.24	4,154.84	0.7
T759	210	1.78	4,154.38	0.7
T826	17	0.94	4,148.54	0.4
T827	16	0.25	4,147.95	0.4
T828	15	0.98	4,147.68	0.5
T829	17	1.98	4,149.68	0.6
T830	14	1.05	4,154.25	0.6
T831	10	0.99	4,176.49	1.2
T838	37	1.89	4,137.29	0.8
T977	200	2.82	4,132.09	1.0
T978D	350	2.92	4,169.02	0.8
T978S	31	3.03	4,169.13	0.8
V875	21	1.84	4,132.85	0.6
W248	602	0.28	4,141.98	2.0
W385	560	2.50	4,151.26	-
W386	560	3.64	4,153.44	-
Zack	257	1.18	4,246.77	5.2

† Not a testing well, but included in graphs for analytical purposes

# Index Map



# W385 - Fish Slough Area

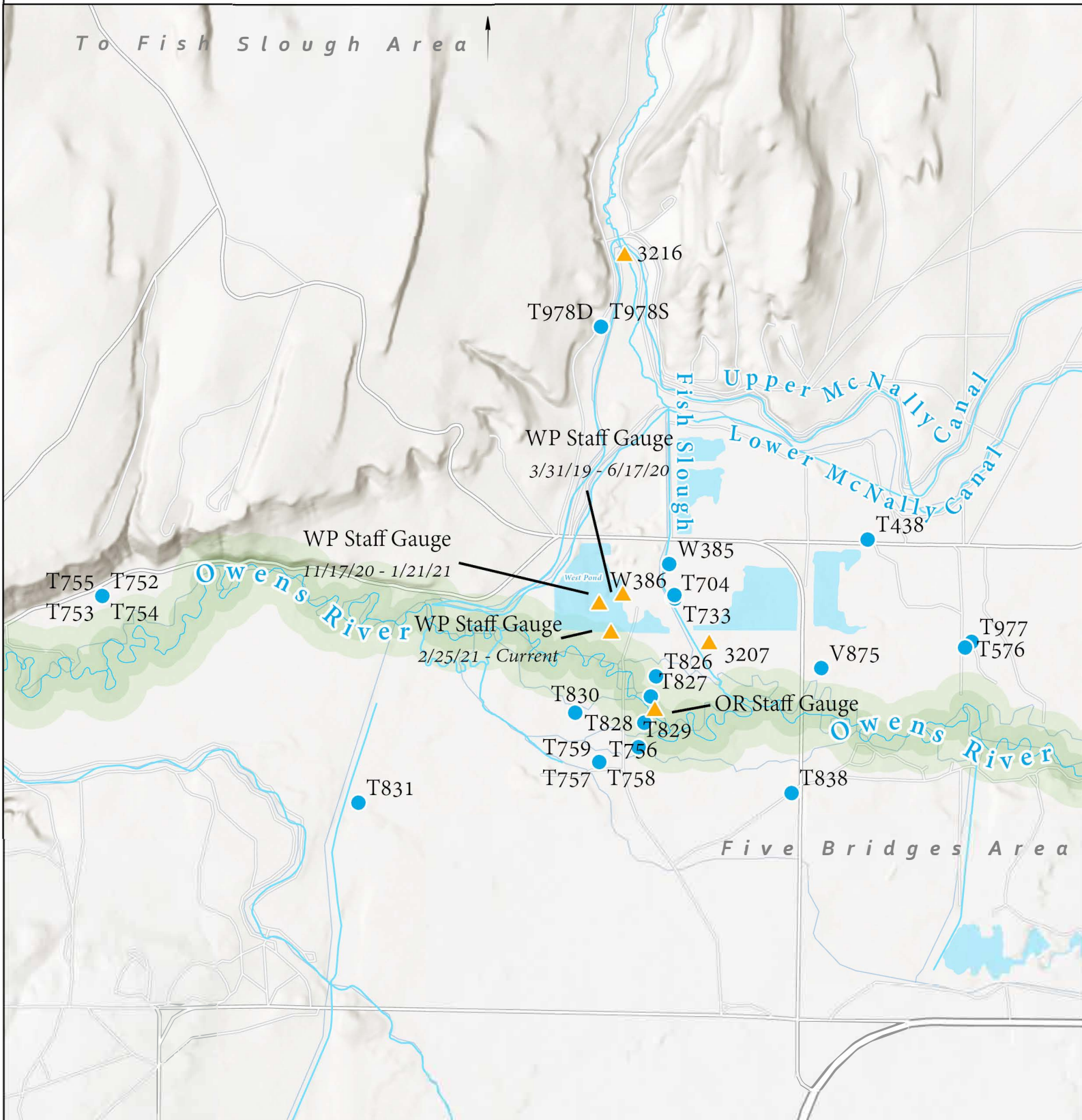


- GW Monitoring Well
- ▲ Flow Station/Staff Gauge
- Lake
- Waterway

0 0.5 1 2 Miles



# North and South of Owens River



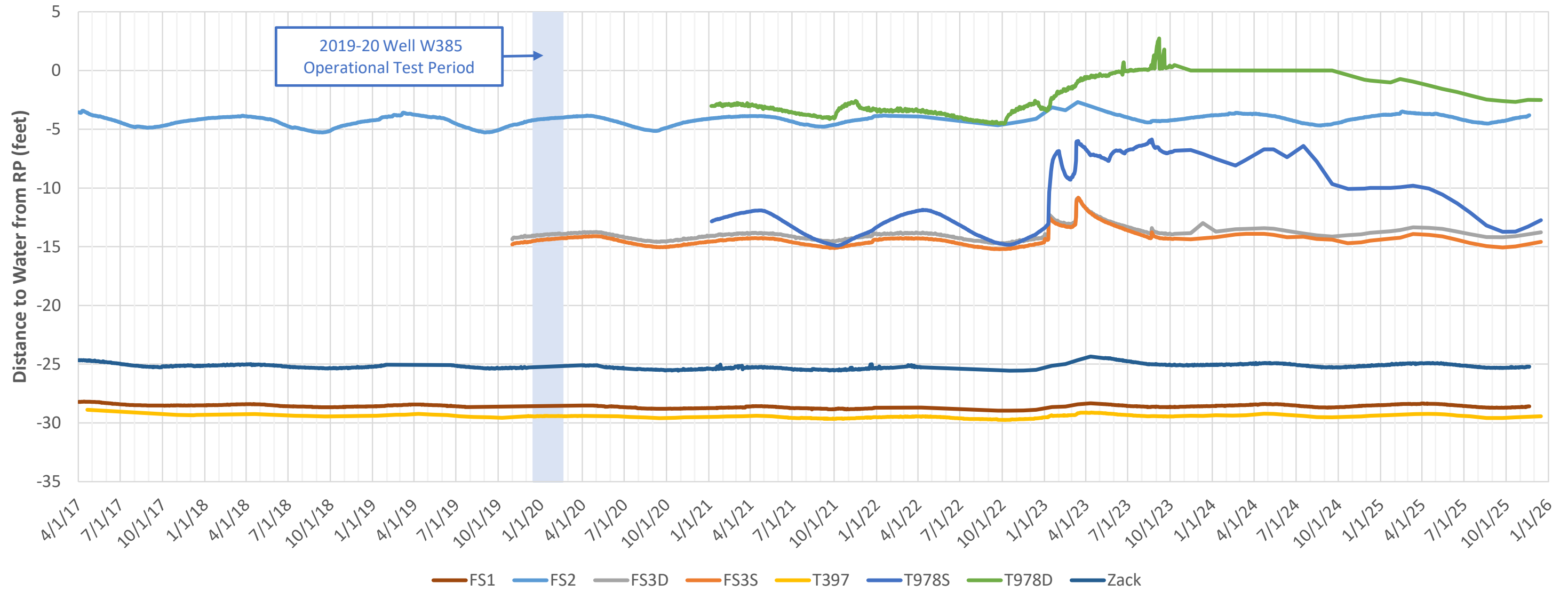
- GW Monitoring Well
- ▲ Flow Station/Staff Gauge
- Lake
- Waterway

0 0.25 0.5 1 Miles



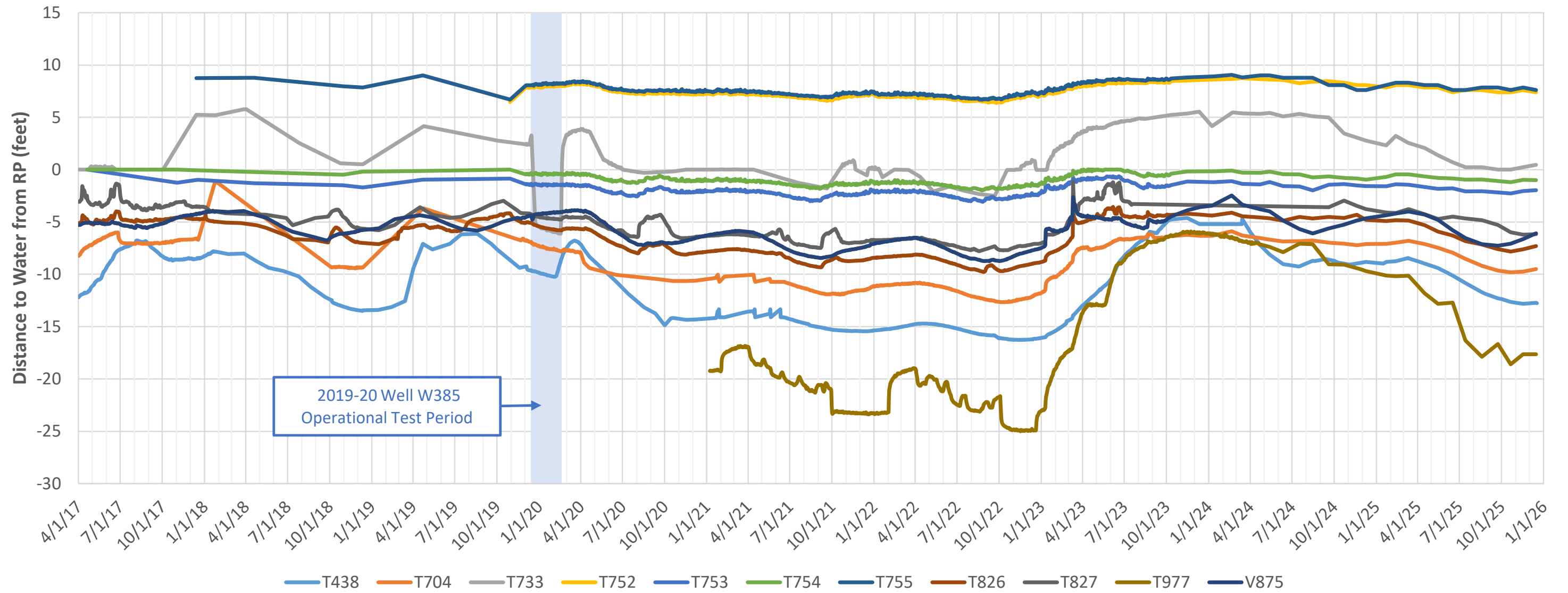
# Groundwater Levels

Test Monitoring Wells - Fish Slough



Note that T978D was experiencing artesian conditions from November 2023 to September 2024 and was not measured during that period.  
 Note that ICWD data for FS-1, FS-2, and Zack monitoring wells not available after 11/20/2025.

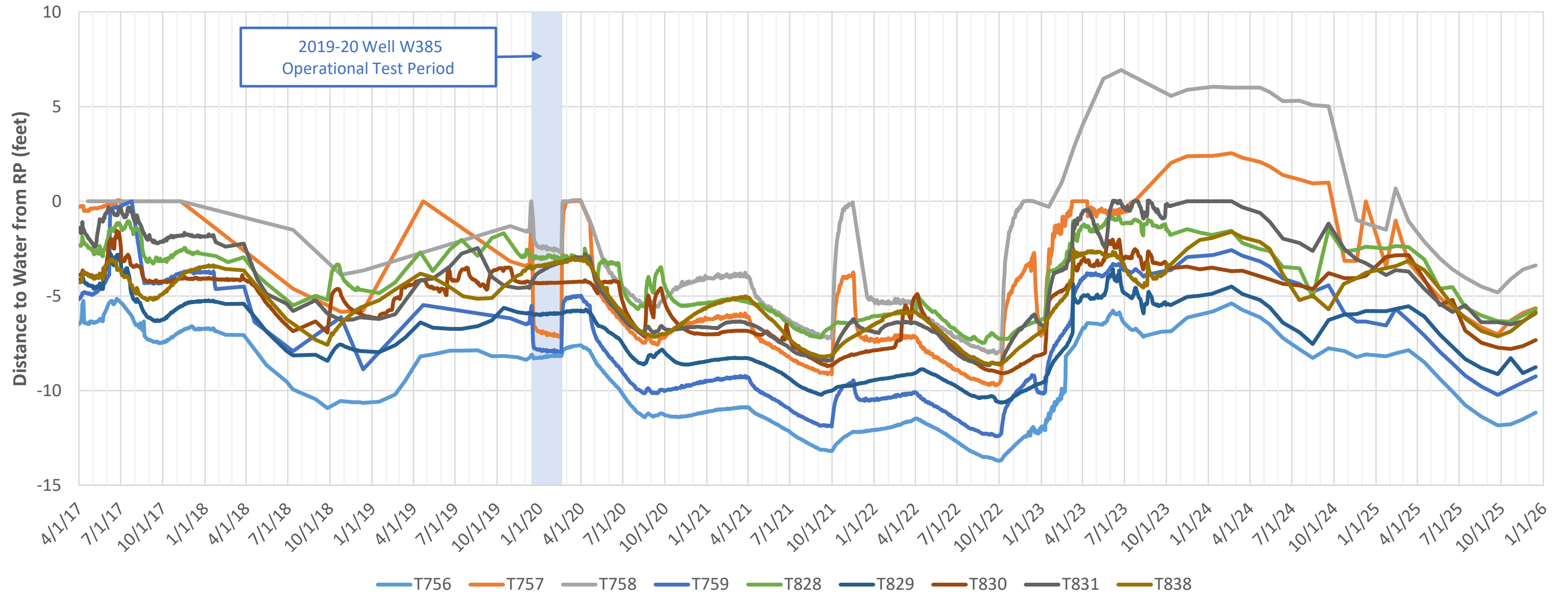
### Test Monitoring Wells - North of Owens River



Note that W386 is not included in the above hydrograph. Nearby deep monitoring well T733 is considered a surrogate for W386. T733 did not produce enough pressure to register on 9/23/2025 and 10/21/2025.

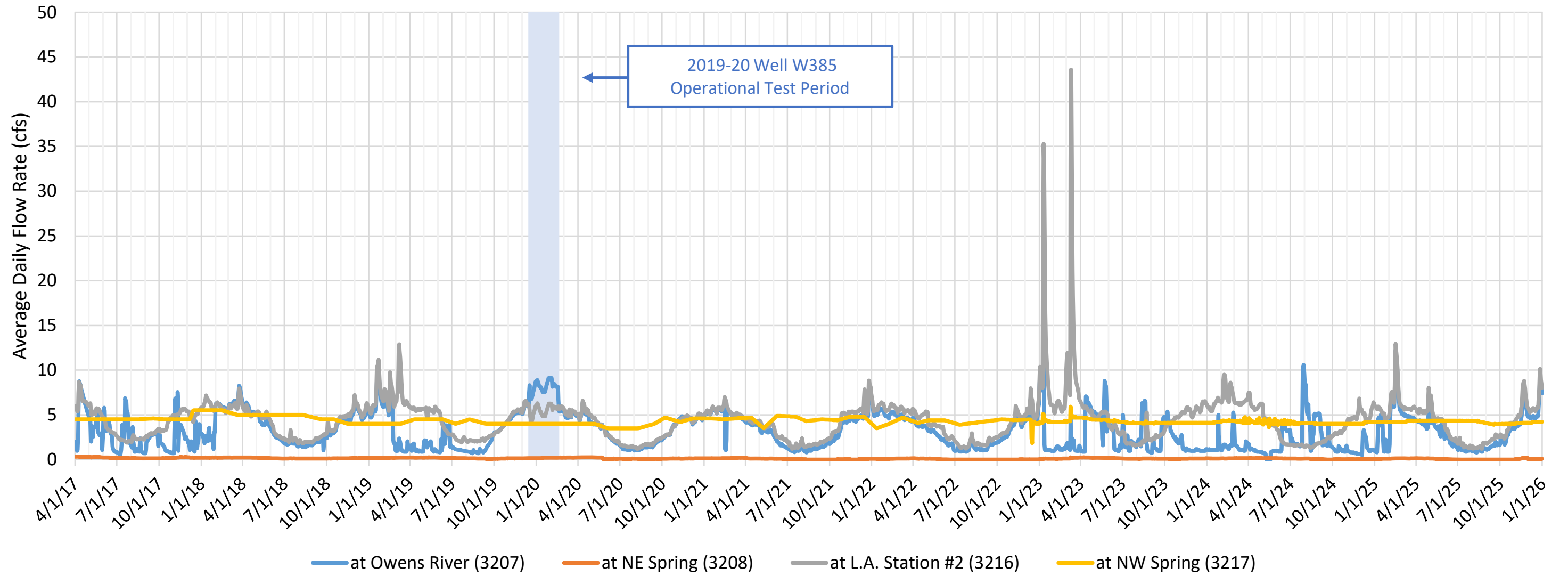
Note that T827 had a blockage at approximately -4 ft-below RP from August 15, 2023 to September 19, 2024.

### Test Monitoring Wells - South of Owens River

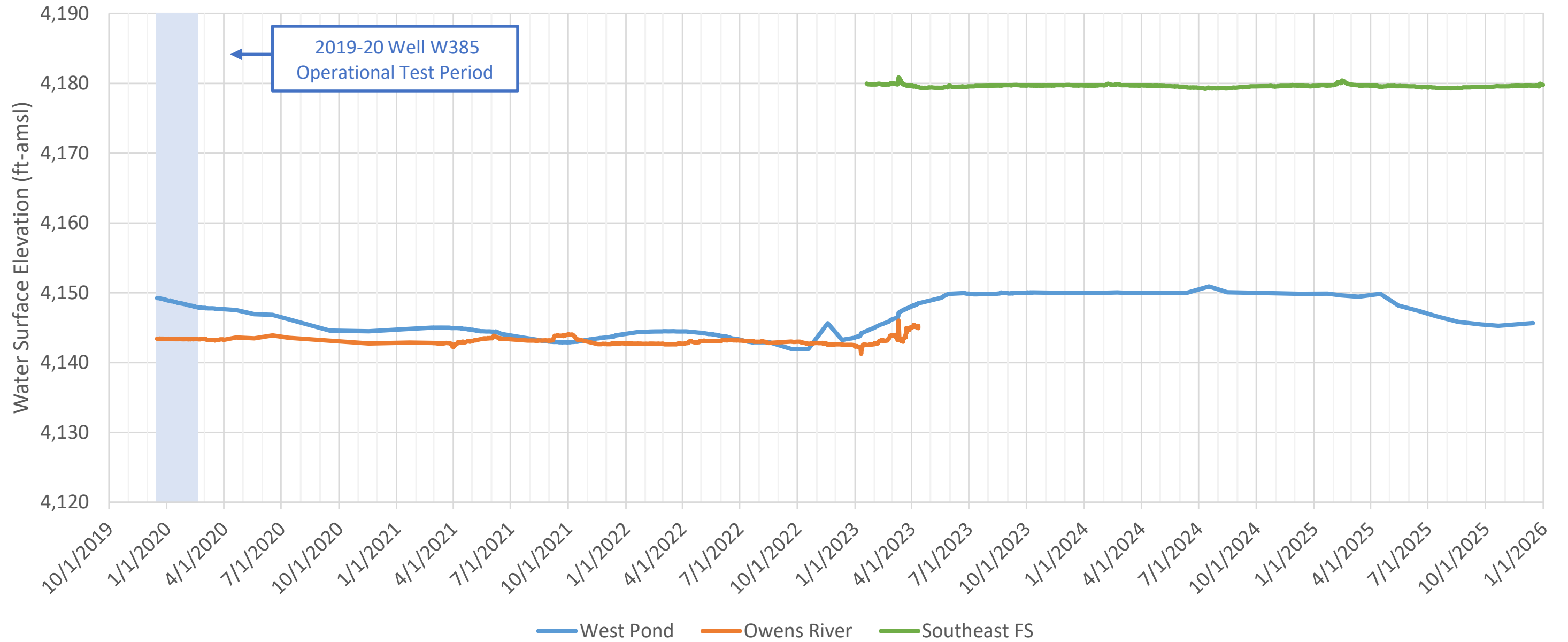


Note that T831 was experiencing artesian conditions from November 2023 to February 2024 and was not measured during that period.

# Fish Slough Flows



# Staff Gauge Water Levels



Note that the West Pond water level was above the staff gauge between June 22, 2023 and April 16, 2025.  
Note that the Owens River Staff gauge remains offline due to high flows.

**Tabulated Groundwater Levels**  
**October - December**





**Tabulated Surface  
Water Levels  
October - December**

Date	Staff Gage		Fish Slough Flow Station	
	West Pond WSE (ft-amsl)	Owens River WSE (ft-amsl)	L.A. Station #2 (3216) Flow (cfs)	at Owens River (3207) Flow (cfs)
9/1/25			1.83	1.13
9/2/25			1.75	1.09
9/3/25			1.86	1.14
9/4/25			1.90	1.22
9/5/25			1.90	1.22
9/6/25			1.92	1.23
9/7/25			1.94	1.22
9/8/25			2.02	1.34
9/9/25			2.06	1.37
9/10/25			2.10	1.37
9/11/25			2.12	1.41
9/12/25			2.21	1.47
9/13/25			2.29	1.47
9/14/25			2.29	1.57
9/15/25			2.31	1.58
9/16/25			2.30	1.57
9/17/25			2.28	1.54
9/18/25			2.31	1.51
9/19/25			2.44	1.74
9/20/25			2.55	1.84
9/21/25			2.81	1.99
9/22/25			2.70	1.87
9/23/25	4145.46		2.59	1.71
9/24/25			2.49	1.59
9/25/25			2.53	1.82
9/26/25			2.70	1.78
9/27/25			2.60	1.77
9/28/25			2.64	1.71
9/29/25			2.65	1.71
9/30/25			2.57	1.62

Date	Staff Gage		Fish Slough Flow Station	
	West Pond WSE (ft-amsl)	Owens River WSE (ft-amsl)	L.A. Station #2 (3216) Flow (cfs)	at Owens River (3207) Flow (cfs)
10/1/25			2.70	3.98
10/2/25			2.82	3.97
10/3/25			2.59	3.97
10/4/25			2.62	4.00
10/5/25			2.58	4.01
10/6/25			2.60	4.00
10/7/25			2.57	4.01
10/8/25			2.62	3.97
10/9/25			2.53	3.95
10/10/25			2.33	3.97
10/11/25			2.40	4.00
10/12/25			2.47	4.01
10/13/25			2.51	4.01
10/14/25			2.62	4.01
10/15/25			2.93	4.01
10/16/25			3.31	4.01
10/17/25			3.18	4.01
10/18/25			3.34	4.01
10/19/25			3.38	4.01
10/20/25			3.74	4.01
10/21/25	4145.24		3.68	4.01
10/22/25			3.84	4.01
10/23/25			4.13	4.01
10/24/25			4.04	4.01
10/25/25			4.13	4.01
10/26/25			4.08	4.01
10/27/25			4.12	4.01
10/28/25			4.01	4.01
10/29/25			4.05	4.01
10/30/25			4.12	4.01
10/31/25			4.10	4.01

Date	Staff Gage		Fish Slough Flow Station	
	West Pond WSE (ft-amsl)	Owens River WSE (ft-amsl)	L.A. Station #2 (3216) Flow (cfs)	at Owens River (3207) Flow (cfs)
11/1/25			4.25	4.01
11/2/25			4.15	4.01
11/3/25			4.30	4.01
11/4/25			4.29	4.01
11/5/25			4.49	4.03
11/6/25			4.64	4.09
11/7/25			4.66	4.09
11/8/25			4.68	4.09
11/9/25			4.81	4.08
11/10/25			4.98	4.10
11/11/25			4.93	4.08
11/12/25			4.95	4.09
11/13/25			4.92	4.08
11/14/25			4.95	4.09
11/15/25			5.17	4.09
11/16/25			5.73	4.11
11/17/25			5.97	4.11
11/18/25			7.48	4.12
11/19/25			8.28	4.12
11/20/25			8.50	4.12
11/21/25			8.67	4.12
11/22/25			8.80	4.12
11/23/25			8.49	4.12
11/24/25			7.96	4.12
11/25/25			7.40	4.12
11/26/25			6.92	4.12
11/27/25			6.71	4.12
11/28/25			6.26	4.12
11/29/25			5.93	4.12
11/30/25			5.79	4.12

Date	Staff Gage		Fish Slough Flow Station	
	West Pond WSE (ft-amsl)	Owens River WSE (ft-amsl)	L.A. Station #2 (3216) Flow (cfs)	at Owens River (3207) Flow (cfs)
12/1/25			5.76	4.12
12/2/25			5.68	4.12
12/3/25			5.54	4.12
12/4/25			5.37	4.12
12/5/25			5.27	4.12
12/6/25			5.36	4.12
12/7/25			5.40	4.12
12/8/25			5.59	4.12
12/9/25			5.49	4.12
12/10/25			5.49	4.19
12/11/25			5.65	4.23
12/12/25			5.77	4.23
12/13/25			5.60	4.23
12/14/25			5.61	4.23
12/15/25	4145.64		5.49	4.23
12/16/25			5.42	4.23
12/17/25			5.44	4.23
12/18/25			5.66	4.23
12/19/25			5.71	4.23
12/20/25			5.69	4.23
12/21/25			5.90	4.23
12/22/25			5.77	4.23
12/23/25			5.85	4.23
12/24/25			6.68	4.23
12/25/25			7.94	4.23
12/26/25			9.75	4.23
12/27/25			10.14	4.23
12/28/25			9.43	4.23
12/29/25			8.90	4.23
12/30/25			8.50	4.23
12/31/25			8.02	4.23

**End of Report**