

**W385/W386 Operational Test**  
**Baseline Hydrologic Data Monitoring**  
**Quarterly Update**

Groundwater Level and Surface  
Water Data

**Prepared by: Eastern Sierra Environmental Group**

**Los Angeles Department of Water and Power**

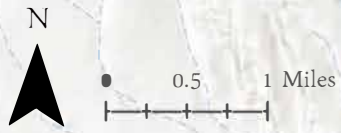
**July, 2024**

## Monitoring Well Information

Well	Total Depth (ft)	RP Offset from Ground (ft)	RP Elevation (ft-amsl)	Distance from W385/W386 (mi)
FS #1	61	1.82	4,228.90	7.1
FS #2	46	1.80	4,221.60	4.0
FS #3D	145	2.59	4,194.84	2.8
FS #3S	35	2.76	4,194.22	2.8
T397	180	1.87	4,230.07	7.1
T438	37	3.21	4,142.11	0.6
T576†	18	0.92	4,129.42	1.0
T704	32	2.33	4,150.63	0.1
T733	674	1.44	4,151.24	0.1
T752	680	2.97	4,200.17	1.8
T753	100	1.97	4,199.17	1.8
T754	210	3.82	4,201.02	1.8
T755	490	2.99	4,200.19	1.8
T756	45	2.00	4,154.60	0.7
T757	310	2.26	4,154.86	0.7
T758	575	2.24	4,154.84	0.7
T759	210	1.78	4,154.38	0.7
T826	17	0.94	4,148.54	0.4
T827	16	0.25	4,147.95	0.4
T828	15	0.98	4,147.68	0.5
T829	17	1.98	4,149.68	0.6
T830	14	1.05	4,154.25	0.6
T831	10	0.99	4,176.49	1.2
T838	37	1.89	4,137.29	0.8
T977	200	2.82	4,132.09	1.0
T978D	350	2.92	4,169.02	0.8
T978S	31	3.03	4,169.13	0.8
V875	21	1.84	4,132.85	0.6
W248	602	0.28	4,141.98	2.0
W385	560	2.50	4,151.26	-
W386	560	3.64	4,153.44	-
Zack	257	1.18	4,246.77	5.2

† Not a testing well, but included in graphs for analytical purposes

# Index Map



Fish Slough

FISH SLOUGH

LAWS WELLFIELD

Production Wells  
W385 & W386



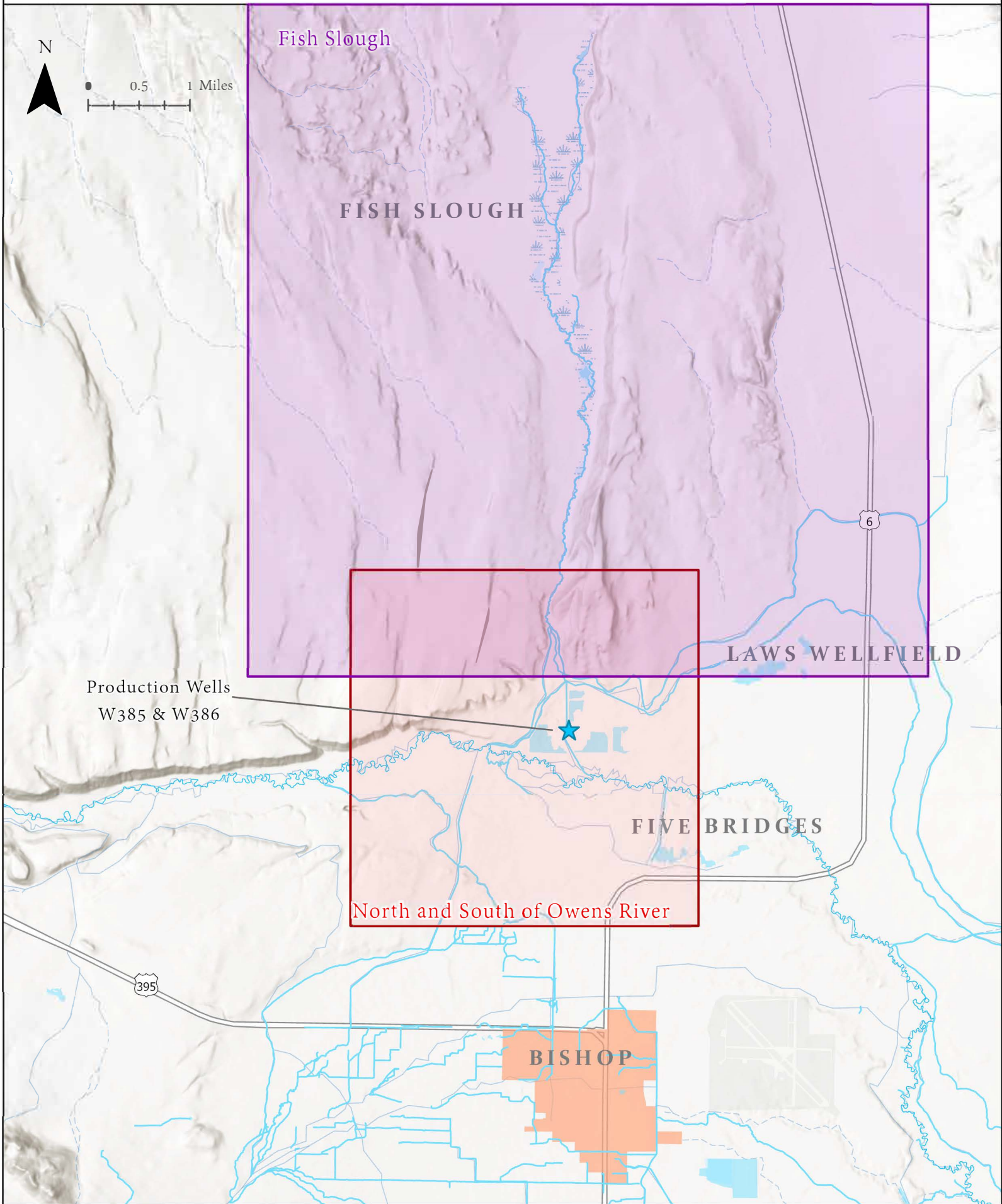
FIVE BRIDGES

North and South of Owens River

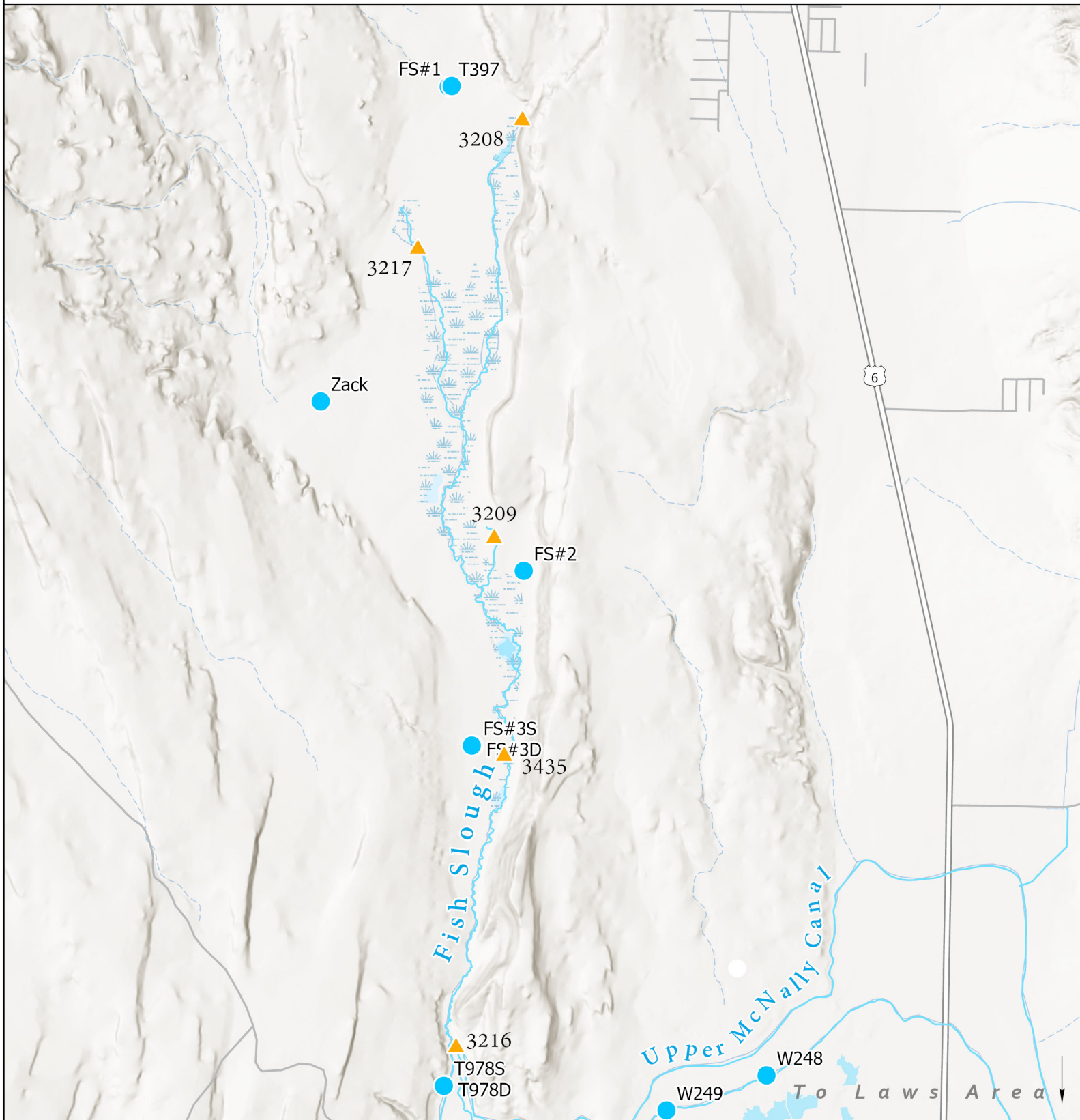
BISHOP

395

6



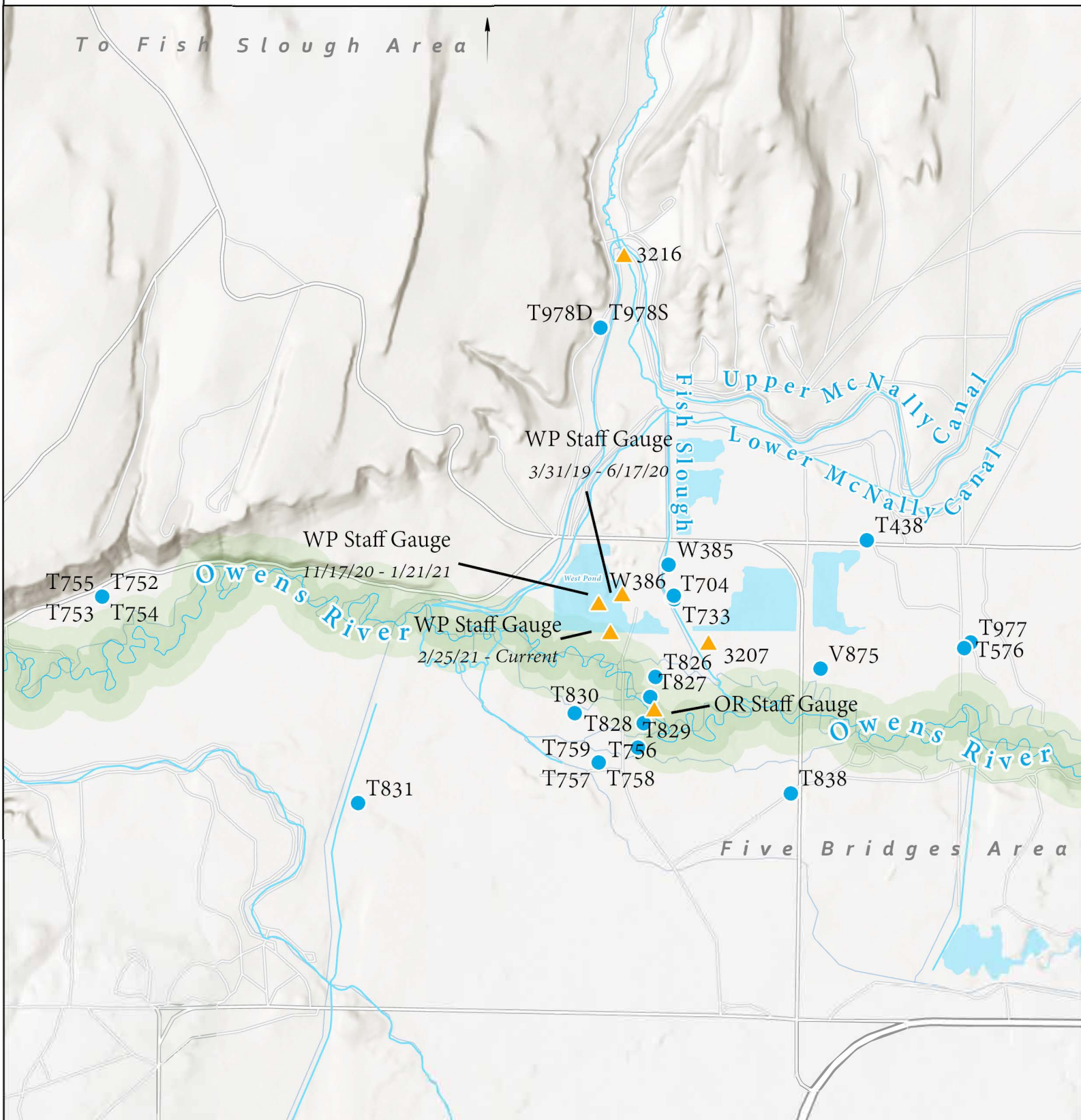
# W385 - Fish Slough Area



- GW Monitoring Well
- ▲ Flow Station/Staff Gauge
- Lake
- Waterway



# North and South of Owens River



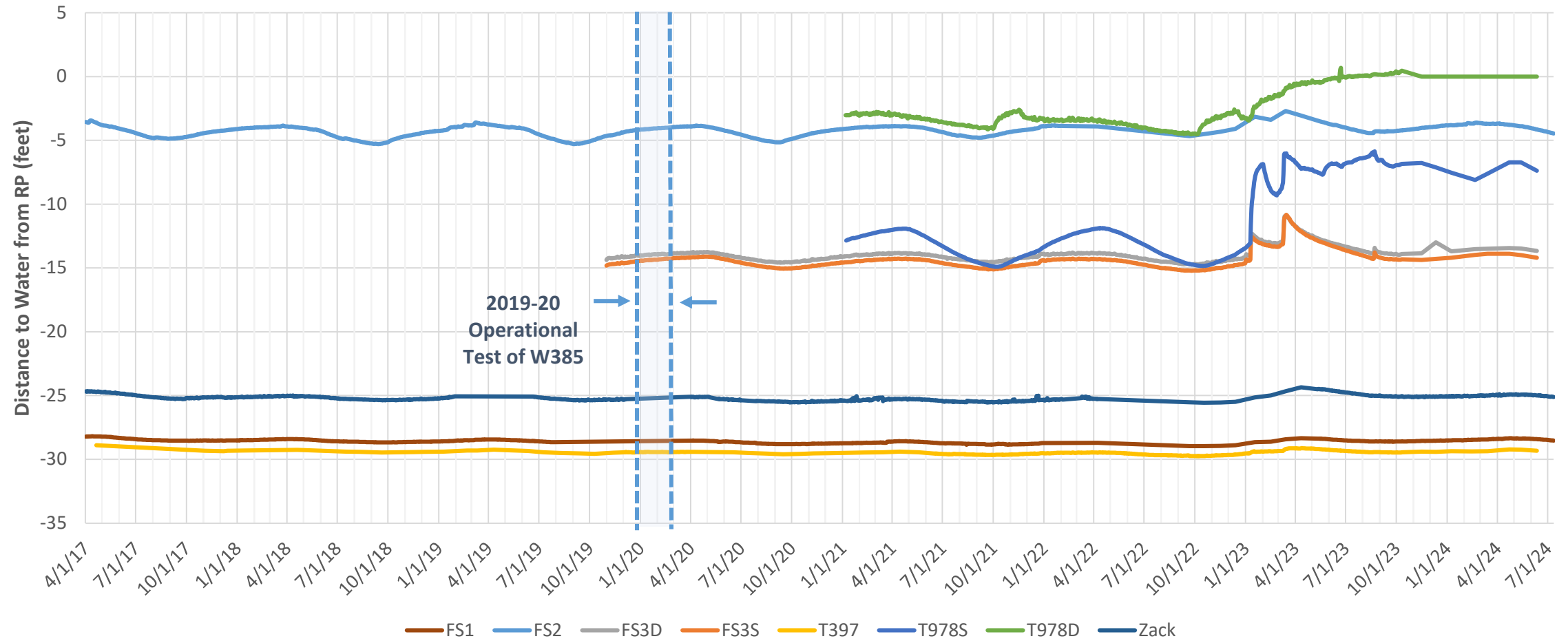
- GW Monitoring Well
- ▲ Flow Station/Staff Gauge
- Lake
- Waterway

0 0.25 0.5 1 Miles



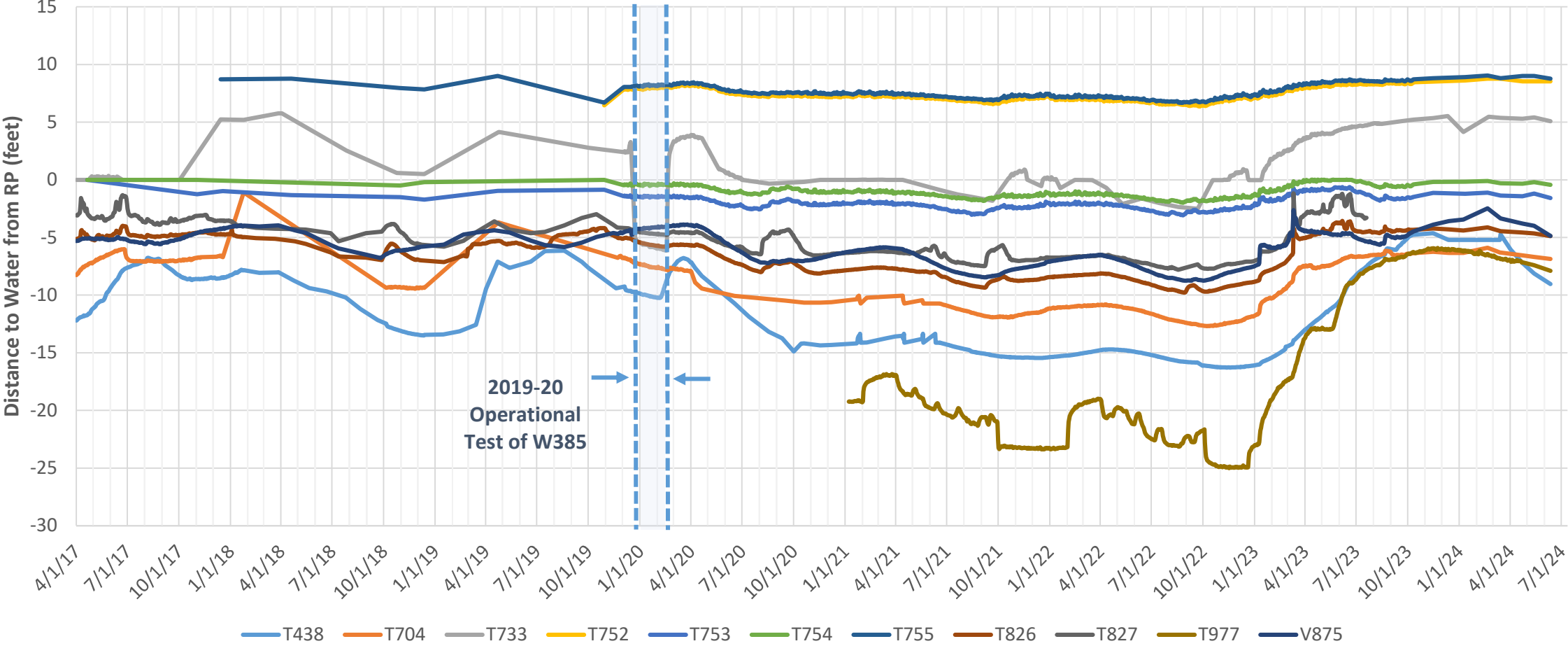
# Groundwater Hydrographs

## Test Monitoring Wells - Fish Slough



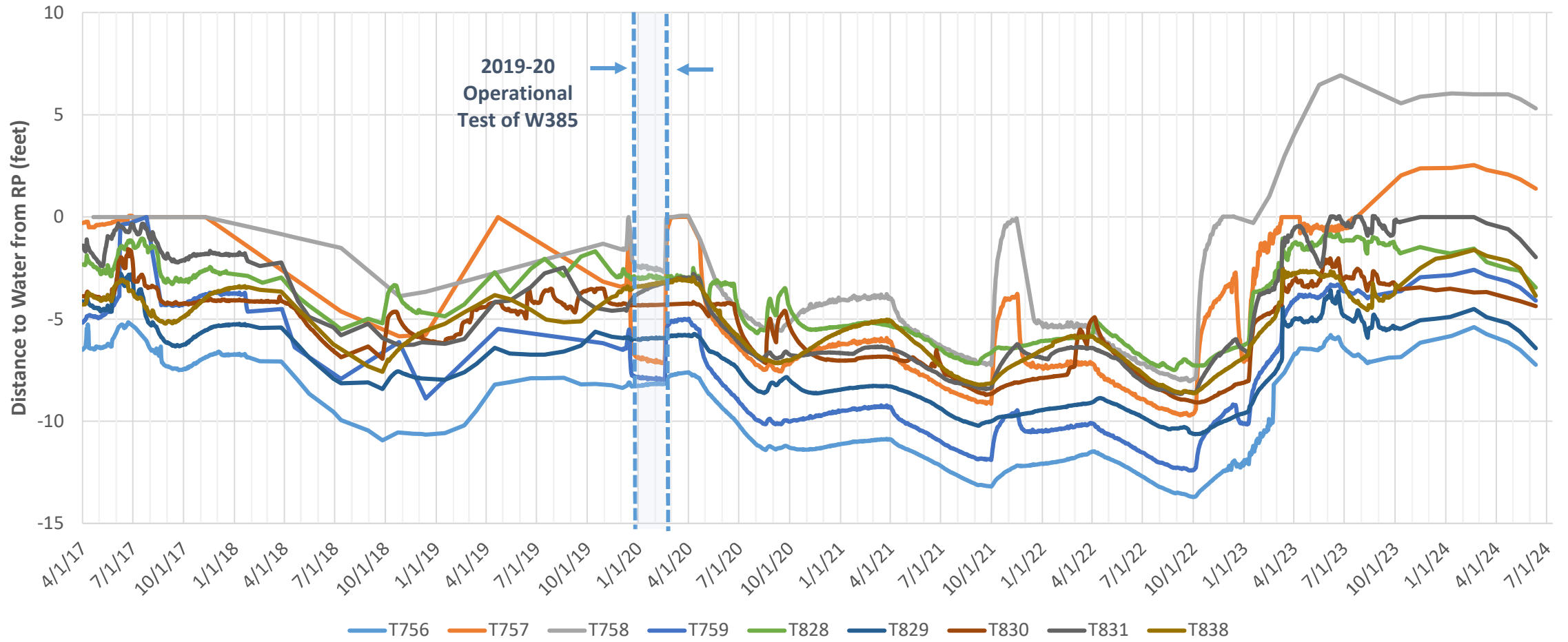
Note that the transducer at T978D was removed on October 10, 2023. T978D has been flowing since November 15, 2023.

### Test Monitoring Wells - North of Owens River

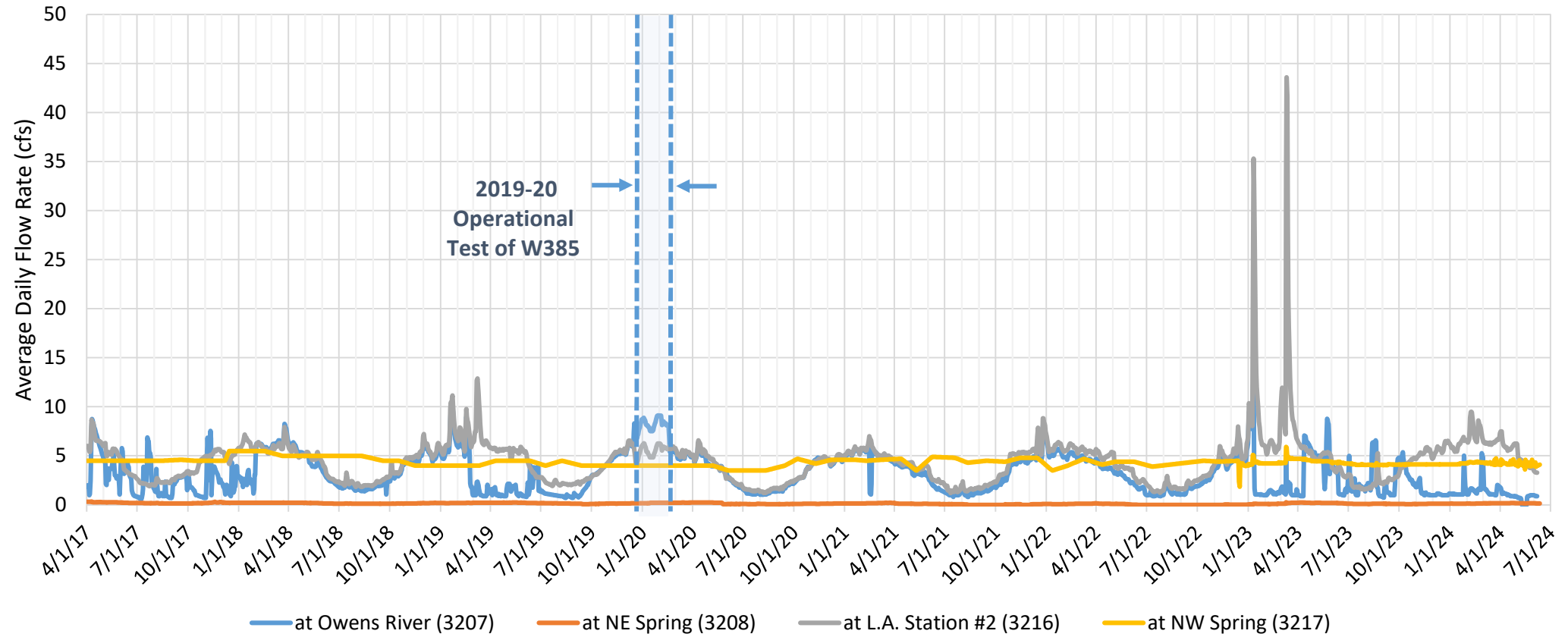


Note that W386 is not included in the above hydrograph. Nearby deep monitoring well T733 is considered a surrogate for W386. W386 has been flowing since October 2, 2023. Note that T827 has had a blockage at approximately -4 ft-below RP since about August 15, 2023. LADWP is working to flush out well.

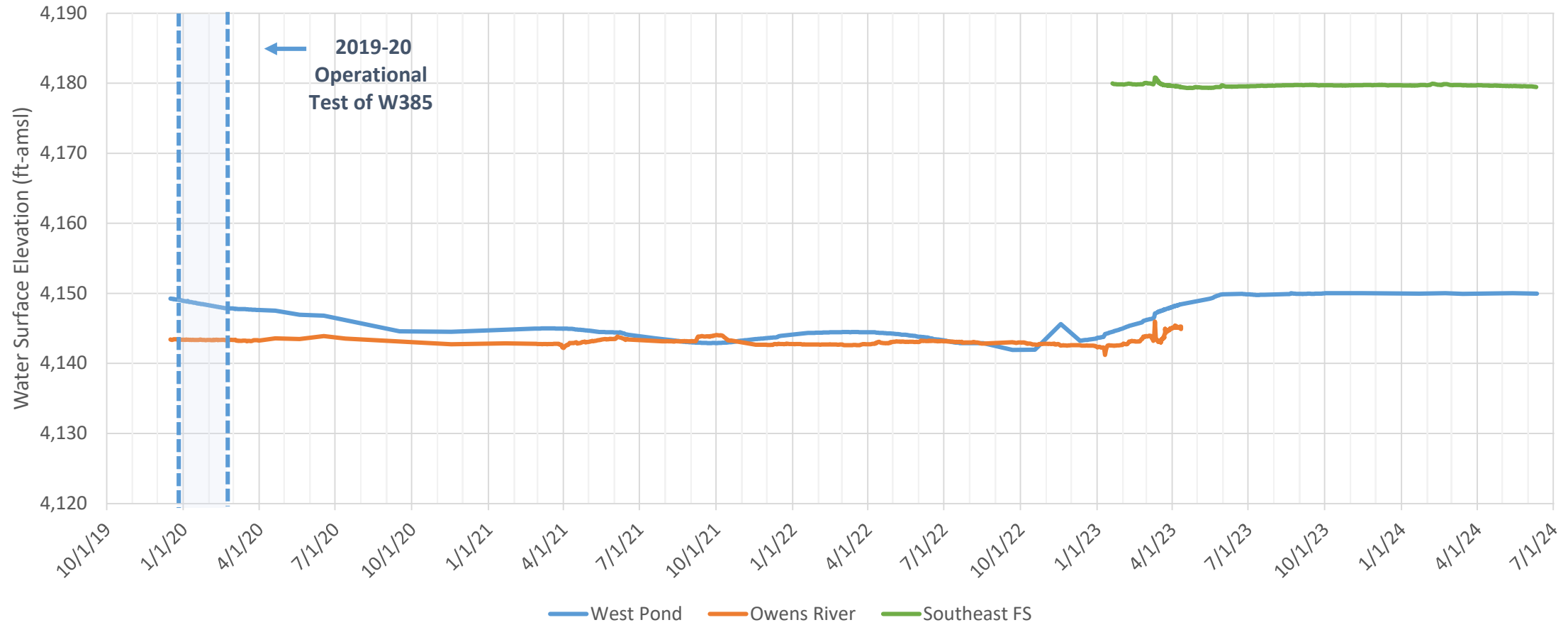
### Test Monitoring Wells - South of Owens River



# Fish Slough Flows



# Staff Gauge Water Levels



Note that the West Pond water level has been above the staff gauge since June 22, 2023.  
Note that the Owens River Staff gauge remains offline due to high flows.

**Tabulated Groundwater  
Values Mar - Jun 2024**





**Tabulated Surface Water  
Values Mar - Jun 2024**

Date	Staff Gage		Fish Slough Flow Station	
	West Pond WSE (ft-amsl)	Owens River WSE (ft-amsl)	L.A. Station #2 (3216) Flow (cfs)	at Owens River (3207) Flow (cfs)
3/1/24			6.39	3.31
3/2/24			6.35	1.72
3/3/24			6.29	1.68
3/4/24			6.35	1.59
3/5/24			6.37	1.56
3/6/24			6.26	1.57
3/7/24			6.26	1.46
3/8/24			6.33	1.37
3/9/24			6.28	1.29
3/10/24			6.20	1.26
3/11/24			6.15	1.11
3/12/24			6.28	1.07
3/13/24			6.36	1.07
3/14/24	4149.94		6.32	1.10
3/15/24			6.14	1.11
3/16/24			6.15	1.07
3/17/24			6.26	1.07
3/18/24			6.35	1.08
3/19/24			6.38	1.07
3/20/24			6.34	1.07
3/21/24			6.35	1.00
3/22/24			6.47	0.98
3/23/24			6.51	0.98
3/24/24			6.50	0.99
3/25/24			6.63	1.54
3/26/24			6.68	2.03
3/27/24			6.69	2.01
3/28/24			6.63	1.91
3/29/24			6.71	1.91
3/30/24			6.92	1.81
3/31/24			7.29	1.80

Date	Staff Gage		Fish Slough Flow Station	
	West Pond WSE (ft-amsl)	Owens River WSE (ft-amsl)	L.A. Station #2 (3216) Flow (cfs)	at Owens River (3207) Flow (cfs)
4/1/24			7.50	1.75
4/2/24			7.49	1.62
4/3/24			7.49	1.25
4/4/24			6.91	1.11
4/5/24			6.30	1.26
4/6/24			6.14	1.26
4/7/24			6.01	1.17
4/8/24			5.96	1.16
4/9/24			5.93	1.16
4/10/24			5.83	1.14
4/11/24			5.88	1.15
4/12/24			5.87	1.11
4/13/24			5.71	0.99
4/14/24			5.52	0.98
4/15/24			5.60	1.07
4/16/24			5.67	0.99
4/17/24			5.66	0.98
4/18/24			5.60	0.91
4/19/24			5.67	0.89
4/20/24			5.74	0.89
4/21/24			5.82	0.89
4/22/24	4149.99		5.90	0.89
4/23/24			5.99	0.89
4/24/24			6.09	0.89
4/25/24			6.17	0.89
4/26/24			6.23	0.85
4/27/24			6.26	0.89
4/28/24			6.23	0.89
4/29/24			6.21	0.89
4/30/24			6.26	0.85

Date	Staff Gage		Fish Slough Flow Station	
	West Pond WSE (ft-amsl)	Owens River WSE (ft-amsl)	L.A. Station #2 (3216) Flow (cfs)	at Owens River (3207) Flow (cfs)
5/1/24			6.19	0.80
5/2/24			5.46	0.77
5/3/24			4.74	0.72
5/4/24			4.71	0.72
5/5/24			4.69	0.72
5/6/24			4.67	0.72
5/7/24			4.63	0.68
5/8/24			4.57	0.64
5/9/24			4.56	0.19
5/10/24			4.44	0.00
5/11/24			4.40	0.00
5/12/24			4.48	0.00
5/13/24	4150.02		4.44	0.00
5/14/24			4.44	0.00
5/15/24			4.40	0.00
5/16/24			4.51	0.00
5/17/24			4.44	0.00
5/18/24			4.37	0.00
5/19/24			4.29	0.79
5/20/24			4.16	0.89
5/21/24			4.05	0.89
5/22/24			3.96	0.89
5/23/24			3.82	0.91
5/24/24			3.91	0.96
5/25/24			3.77	0.98
5/26/24			3.82	0.98
5/27/24			3.82	0.98
5/28/24			3.80	0.98
5/29/24			3.74	0.98
5/30/24			3.67	0.98
5/31/24			3.52	0.98

Date	Staff Gage		Fish Slough Flow Station	
	West Pond WSE (ft-amsl)	Owens River WSE (ft-amsl)	L.A. Station #2 (3216) Flow (cfs)	at Owens River (3207) Flow (cfs)
6/1/24			3.43	0.97
6/2/24			3.36	0.94
6/3/24			3.32	0.89
6/4/24			3.32	0.92
6/5/24			3.29	0.89
6/6/24			3.29	0.89
6/7/24				
6/8/24				
6/9/24				
6/10/24				
6/11/24	4149.97			
6/12/24				
6/13/24				
6/14/24				
6/15/24				
6/16/24				
6/17/24				
6/18/24				
6/19/24				
6/20/24				
6/21/24				
6/22/24				
6/23/24				
6/24/24				
6/25/24				
6/26/24				
6/27/24				
6/28/24				
6/29/24				
6/30/24				

**End of Report**