



# Stormwater Capture Parks Program

Key Stakeholder Briefings

June / July 2020



# Today's Objectives

- Brief Intros
- Local Water Supply Benefits
- Community Benefits
- Program Schedule
- Discussion

<b>Fernangeles Park</b>	<b>Strathern Park North</b>	<b>David M. Gonzales Recreation Center</b>
<b>Valley Plaza Park North</b>	<b>Whitsett Fields Park North</b>	<b>Valley Plaza Park South</b>
<b>Alexandria Park</b>	<b>Valley Village Park</b>	<b>North Hollywood Park</b>

# Local Water Supply Benefits

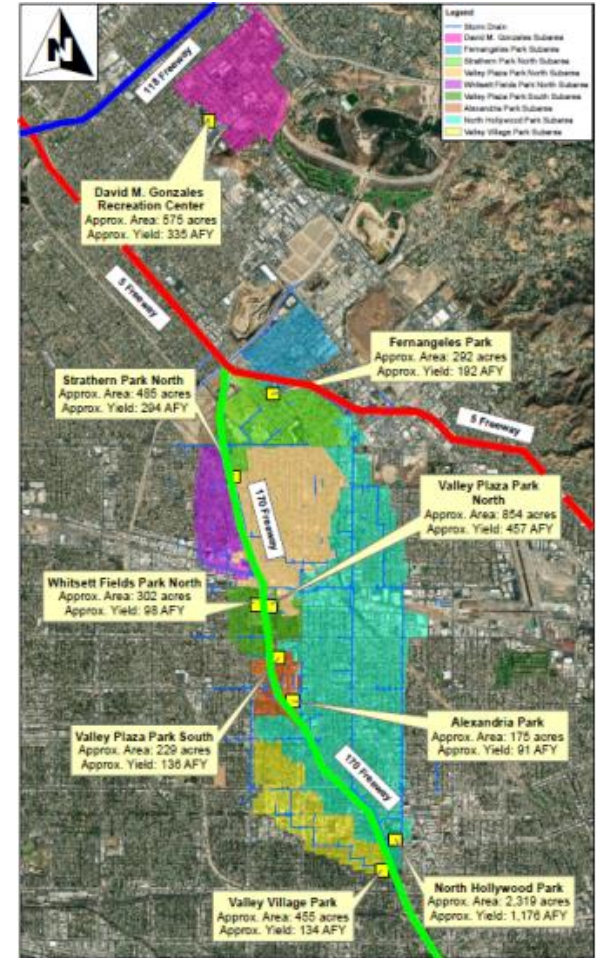
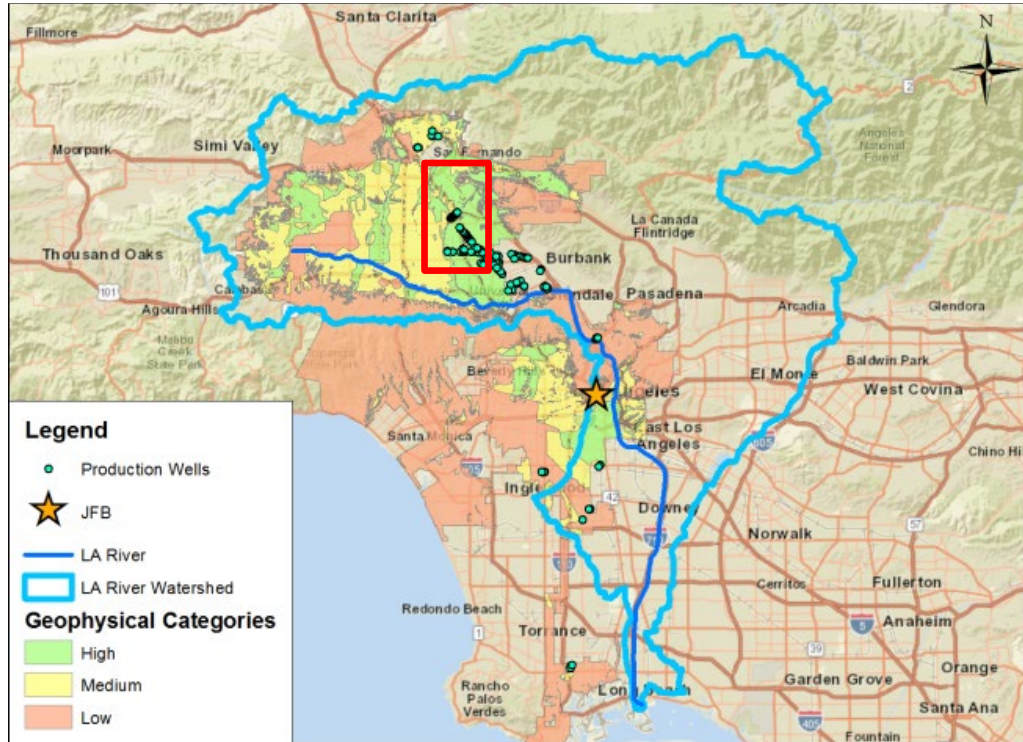
- L.A.'s Green New Deal
  - Implement multi-benefit stormwater capture projects to increase local water supply and improve local water quality
  - Source 70% of LA's water locally
  - Capture 150,000 AFY of stormwater by 2035
    - Annual capture is equal to 49,000,000,000 gallons, which can supply 450,000 single-family households annually
  - Deliver Environmental Justice & Social Equity

# Community Benefits

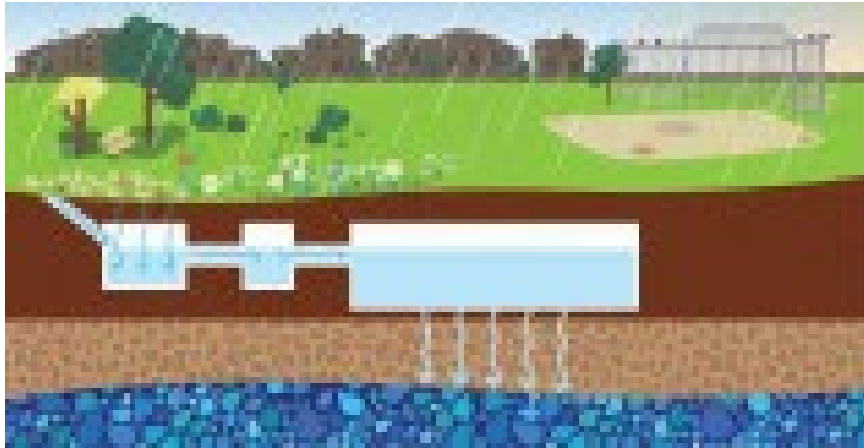
- Safe and Clean Communities
  - Mitigate localized flooding
- Environmental Education & Signage
  - Watershed health and awareness
- Expand Park Infrastructure
  - Improved sports fields and playgrounds
- Job Creation
  - ~750 jobs



# Parks Program Locations



# Typical Program X-Section



## Broadway Neighborhood Greenway *Los Angeles, CA*



## Albion Riverside Park *Los Angeles, CA*



# Overview for Each Park





# Fernangeles Park

Approximate Area: 292 Acres

Approximate Yield: 192 AFY

- Improve two baseball fields
- Improve picnic tables
- Improve parking lot



# Strathern Park North

Approximate Area: 485 Acres

Approximate Yield: 294 AFY

- Three new baseball fields
- New sports lighting
- New irrigation system
- New 35-car parking lot
- New landscaping



# David M. Gonzales

Approximate Area: 575 Acres

Approximate Yield: 335 AFY

- Improve two baseball fields
- Add one soccer field
- Improve parking lot



# Valley Plaza Park North

Approximate Area: 854 Acres

Approximate Yield: 457 AFY



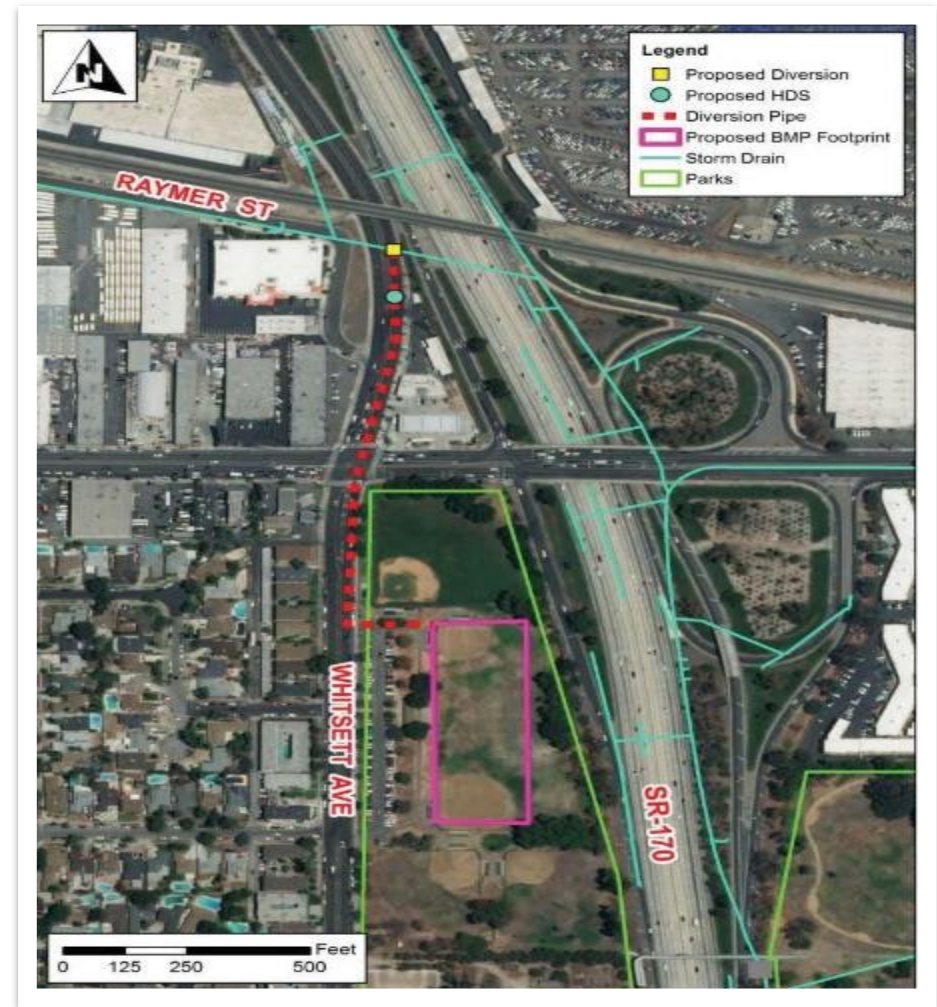
- Replace trail paths
- Replace outdoor fitness equipment
- Replace irrigation system
- Replace sod

# Whitsett Fields Park North

Approximate Area: 302 Acres

Approximate Yield: 98 AFY

- Improve two baseball fields
- Replace sports lighting
- Replace irrigation system



# Valley Plaza Park South

Approximate Area: 229 Acres

Approximate Yield: 136 AFY



- Replace trail paths
- Replace sod
- Replace irrigation system

# Alexandria Park

Approximate Area: 175 Acres

Approximate Yield: 91 AFY



- New walking paths
- New irrigation
- New picnic benches
- Replace sod

# North Hollywood Park

Approximate Area: 2,319 Acres

Approximate Yield: 1,176 AFY



- Replace trail paths
- Replace parking lots
- Replace sod
- Replace irrigation system
- New landscaping
- Use reclaimed water to irrigate park



# Valley Village Park

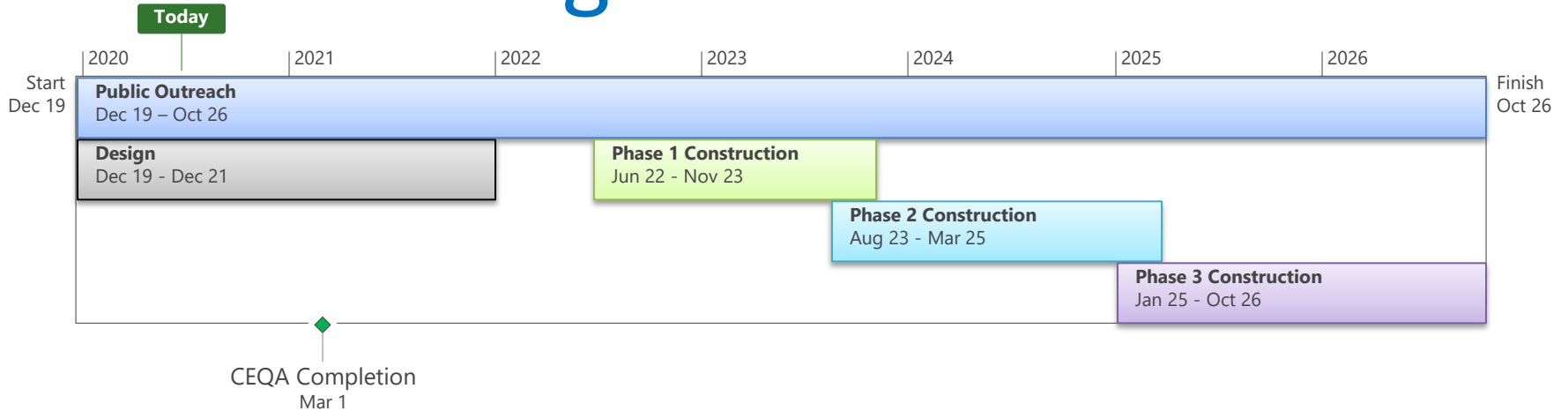
Approximate Area: 455 Acres

Approximate Yield: 134 AFY



- Improve trail paths
- Replace irrigation
- New fitness equipment

# Program Schedule



## Preliminary Construction Phasing\*

- Phase 1: Valley Village, Strathern & Fernangeles
- Phase 2: D. M. Gonzales, Valley Plaza No. & North Hollywood Part 1
- Phase 3: No. Hollywood Part 2, Valley Plaza So., Alexandria & Whitsett

\*Construction schedules will be carefully managed and rolled out sequentially, as funding becomes available, to reduce impacts to the community.

**Questions?**